

OZUPADKEY User Guide (Ver.1.1)

Oct.23 2009

Contents

Chapter 1	Introduction
Chapter 2	Installing OZUPADKEY
Chapter 3	Default key assignments for popular applications
Chapter 4	Custom key settings
Chapter 5	Combination of Joystick & Mouse
Chapter 6	How to fly in Google Earth
Chapter 7	General disclaimer
Chapter 8	Copyright

Chapter 1 Introduction

OZUPADKEY is a software package that allows a User to assign key presses to OZUPAD buttons instead of using the keyboard.

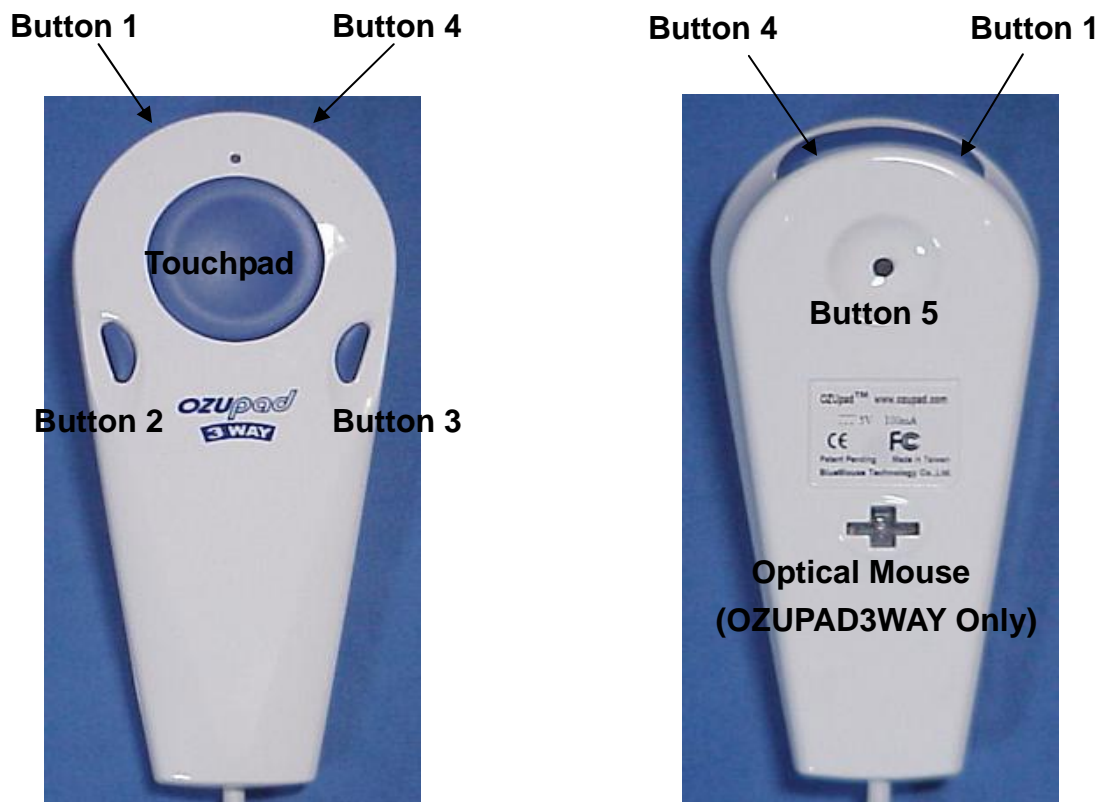
OZUPADKEY automatically assigns keys for the following applications: Google Map, Google Earth, Windows Media Player, Windows Media Center, Yahoo Map and the classic games Tetris and Space Invaders. The User can edit any of the pre-assigned key sets or create custom key sets for applications of their choice.

OZUPADKEY provides exactly the same functionality for all members of the OZUPAD product range. Unless specifically stated OZUPAD refers to any OZUPAD device throughout this document.

OZUPADKEY can control one or two OZUPADs and can provide different key emulations for each of the attached devices.

An OZUPAD must be in Joystick mode in to work with OZUPADKEY.

The OZUPAD Button names referred to throughout this document are shown below, Please note that only OZUPAD3WAY includes an optical mouse, however, the operation of the optical mouse is not affected by OZUPADKEY.



<Summary of Functions >

- Each button and UP, DOWN, RIGHT & LEFT on the Touchpad can be assigned for 1 key, 2 or even 3key presses. For instance, 1 button for “CTRL+C”, or “SHIFT+CTRL+S” and so on.
- If the User holds down a button on OZUPAD the key signal is output repeatedly. The User can set the speed of the repetition to one of 3 levels.
- The pressure required to make the Touchpad register a press can be set to one of 3 different levels by the User.
- Two OZUPADs can be used simultaneously on one PC in any combination, for example 2 Joysticks or 1 Mouse and 1 Joystick and so on. Please note that 2 Mouse is also possible although, as there is only 1 cursor on the screen, this may be a little confusing for the User.

Please refer to Chapters 3 and 4 for how to setup OZUPAD and OZUPADKEY.

<Remarks>

OZUPAD must be in Joystick mode to work with the OZUPADKEY software.

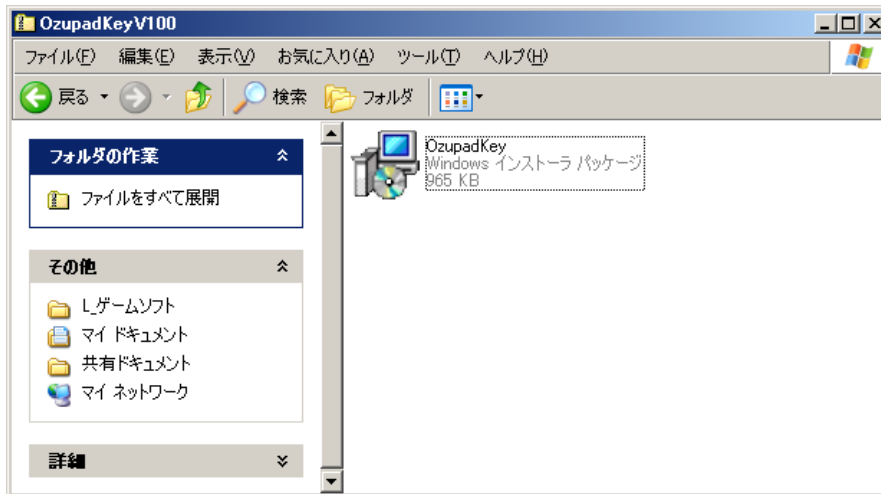
Please confirm that OZUPAD is in Joystick mode by checking that the color of the LED on OZUPAD is purple.

The mode can be changed pressing Button 5 (on the back of OZUPAD).

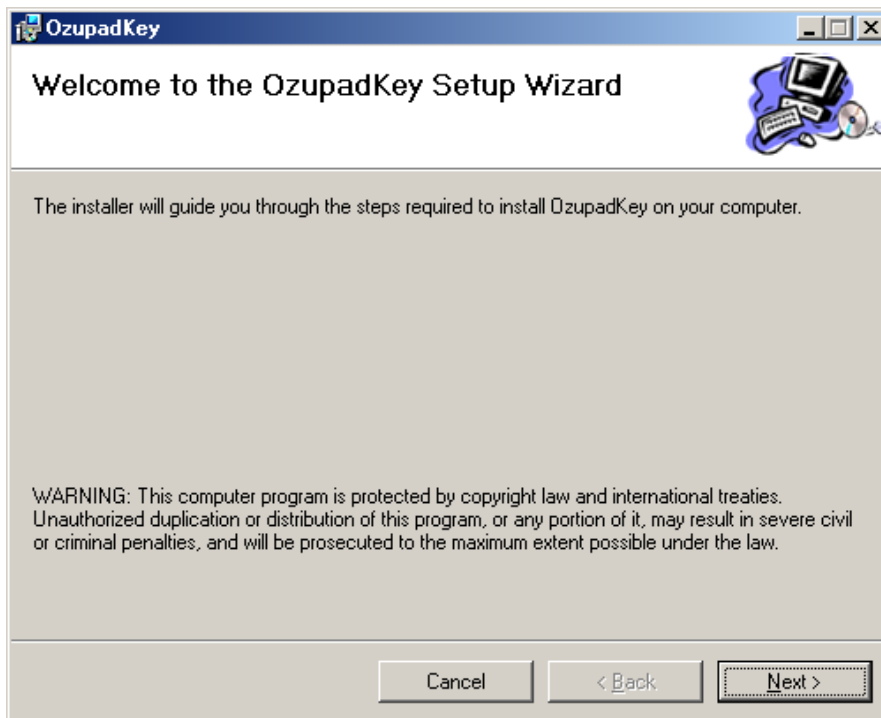
Chapter 2 Installing OZUPADKEY

To download the latest OZUPADKEY software go to <http://www.ozupad.com> and click on the DOWNLOAD tag. Follow the instructions on the website to download OZUPADKEY

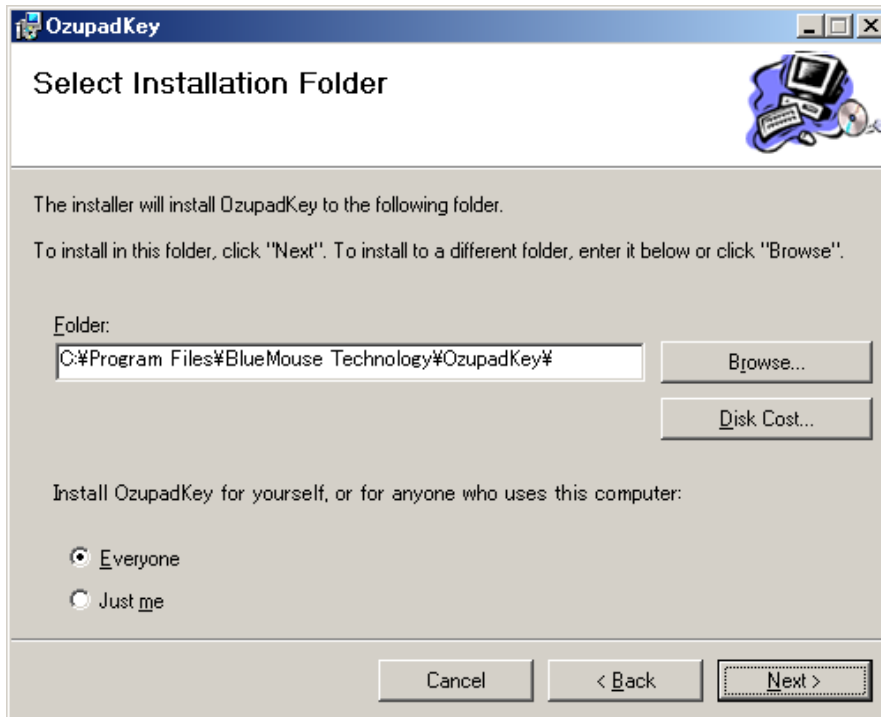
When you download OZUPADKEY you will see the screen below.



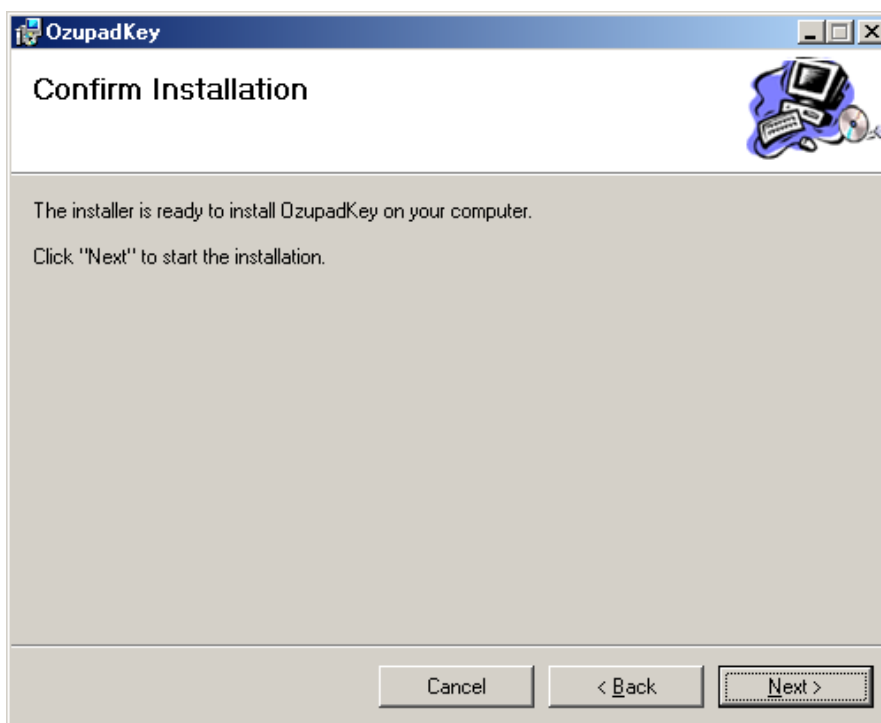
Double click OZUPADKEY to start installation.



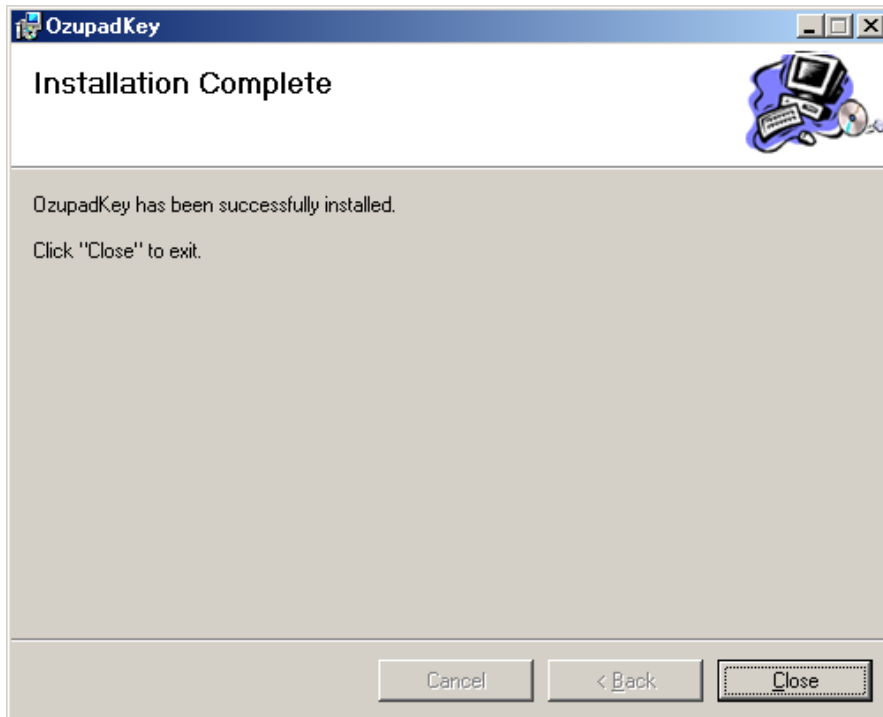
Click Next to proceed with installation



Click Next to proceed with installation

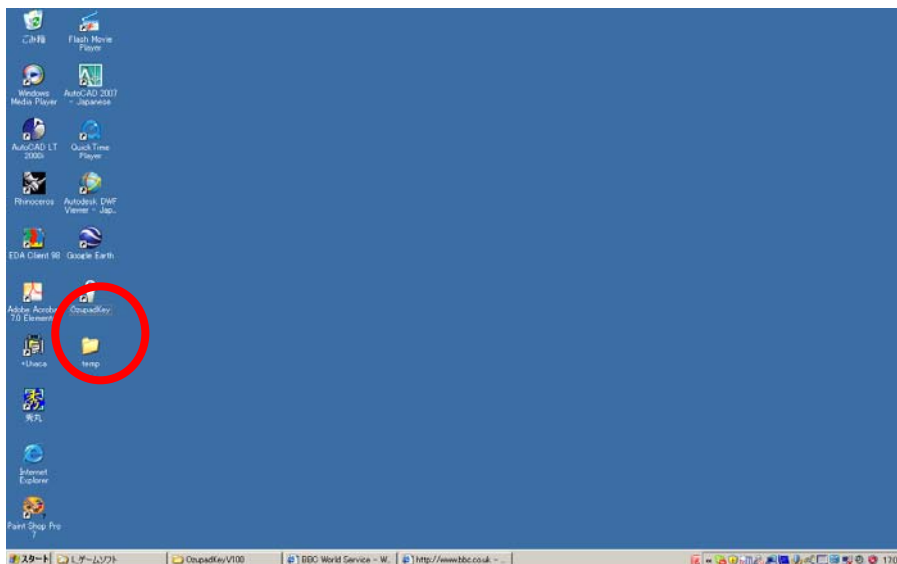


Click Next to confirm you want to install OZUPADKEY



Click Close.

The OZUPAD icon will appear on your desktop.
Double-click this icon to start the OZUPADKEY
Software



Chapter 3 Default key assignments for popular applications

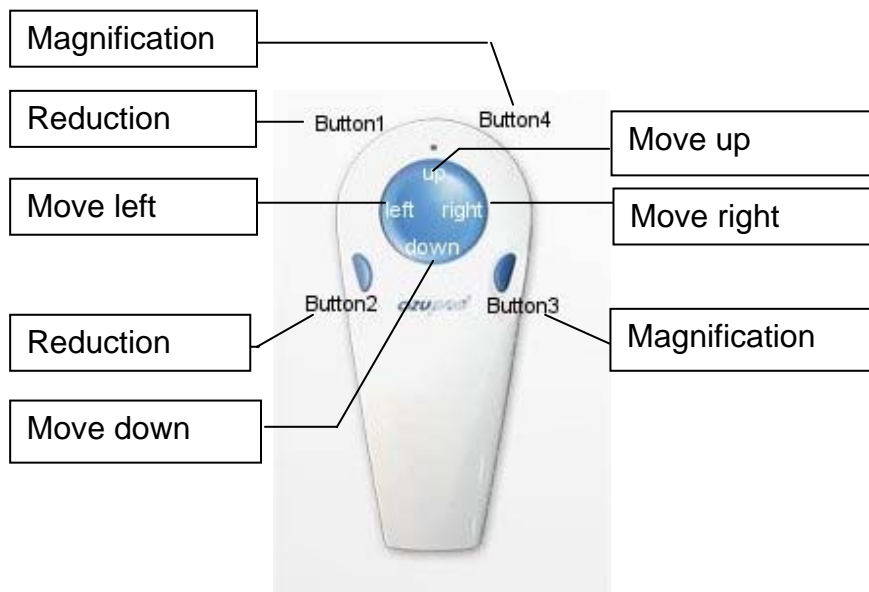


When OZUPADKEY is running the OZUPAD icon appears in the bar in the lower right of the desktop, when this icon is visible OZUPADKEY will automatically set the key assignments for the following applications:

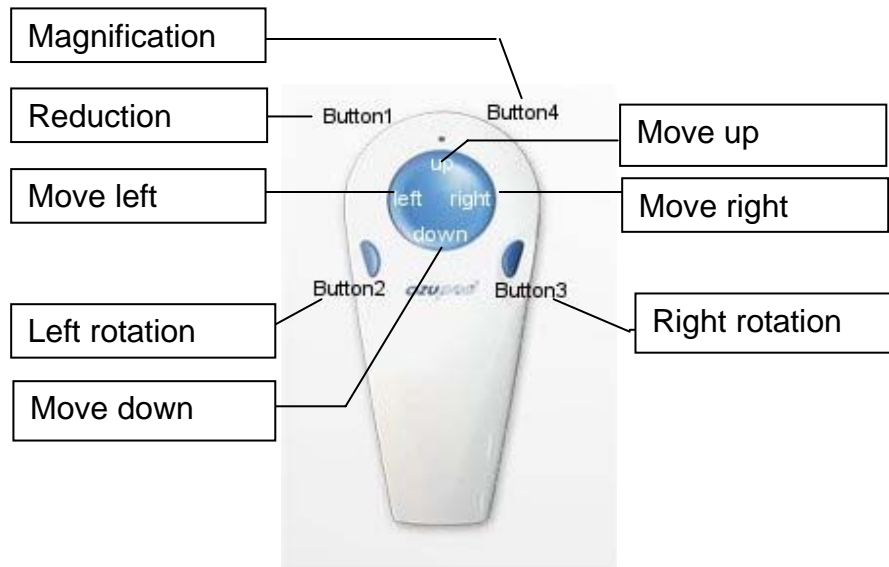
- Google Earth
- Google Map
- Windows Media Player 11
- Windows Media Center
- Yahoo Map
- TETRIS
- SPACE INVADERS

The default key assignment for each of these applications is shown below:

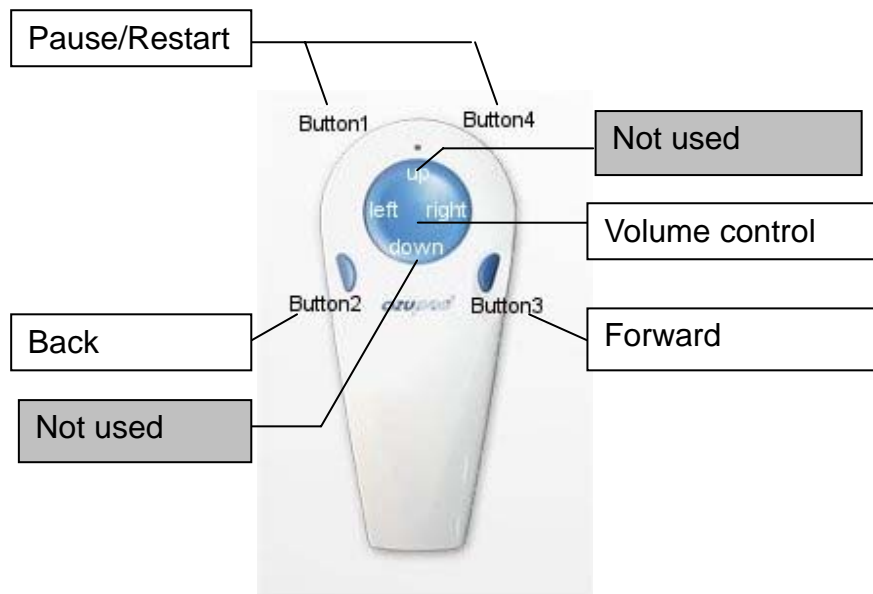
GOOGLE MAP and YAHOO MAP:



GOOGLE EARTH:

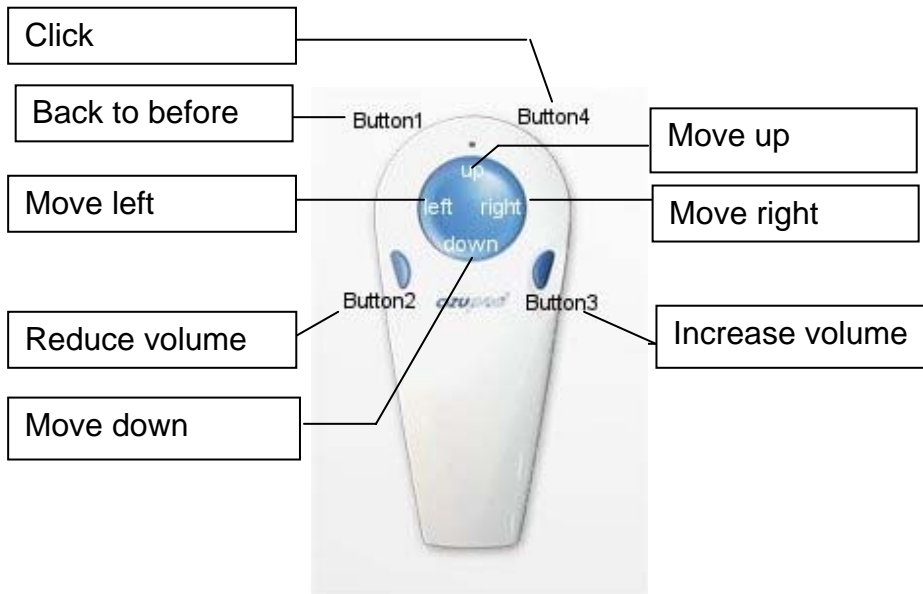


WINDOWS MEDIA PLAYER 11:

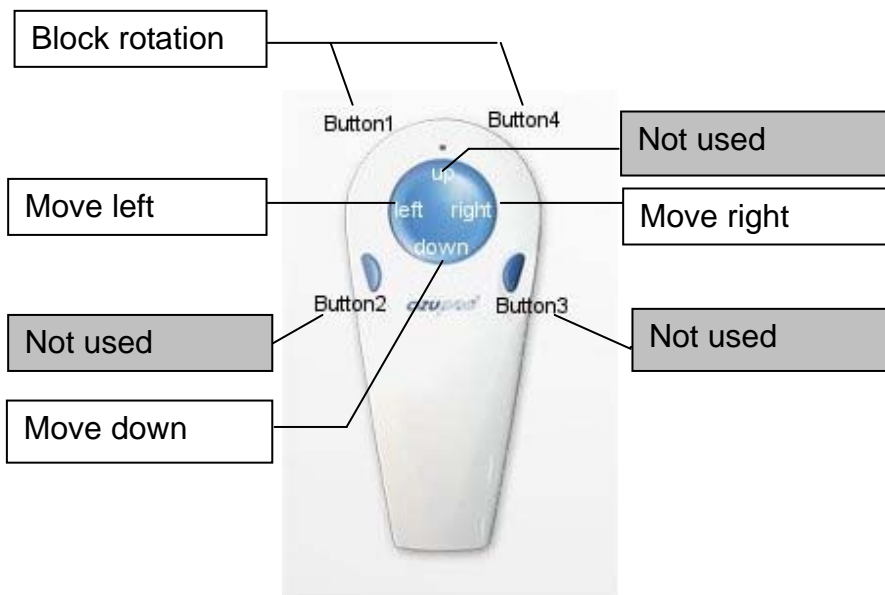


Volume is controlled by the Touchpad. To increase the volume move your finger around the Touchpad in a clockwise direction, anti-clockwise will reduce the volume.

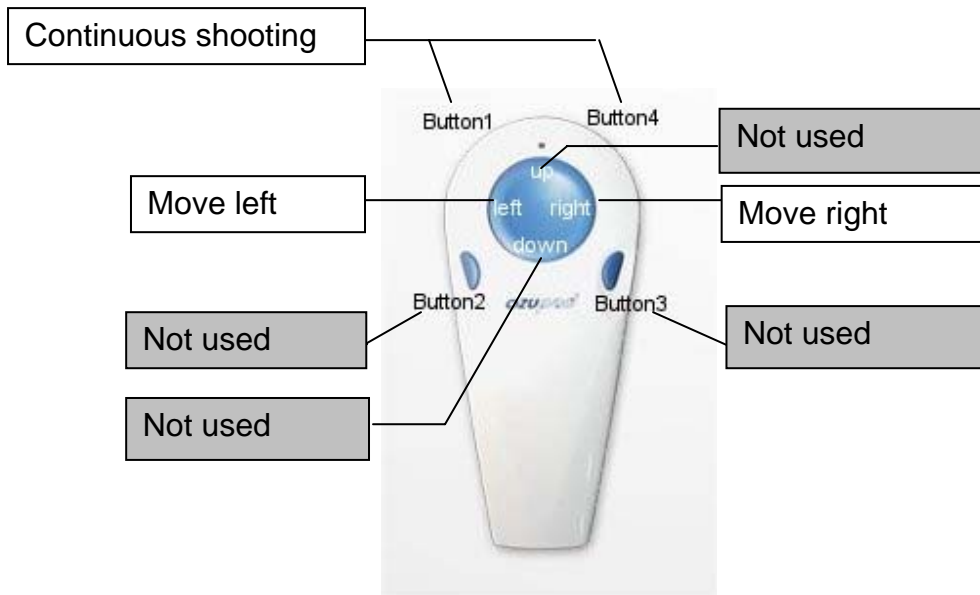
WINDOWS MEDIA CENTER of WINDOWS7 & VISTA



TETRIS:



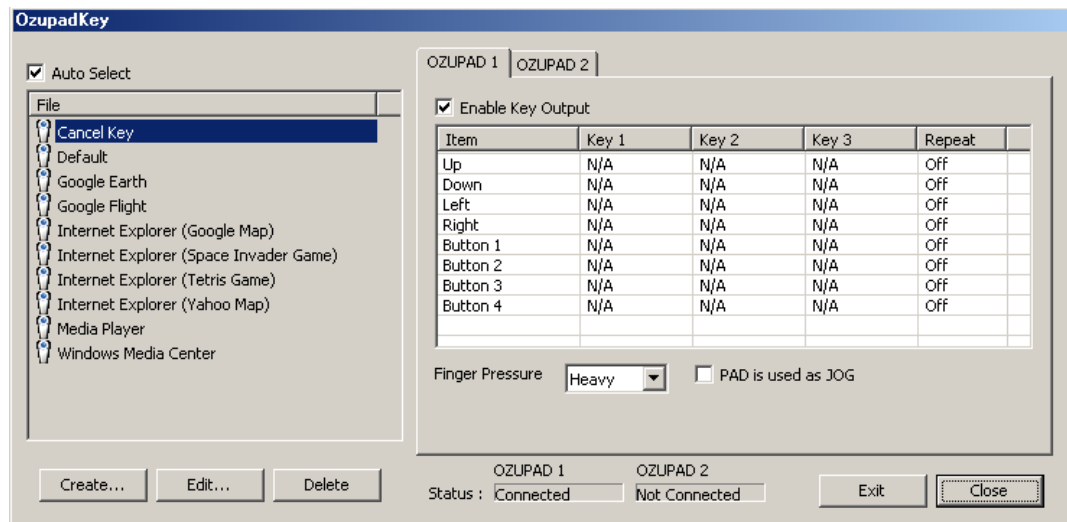
SPACE INVADERS:



Chapter 4 Custom key settings

OZUPADKEY allows you to make custom keysets for your chosen applications.

Open OZUPADKEY by clicking on the OZUPAD icon in the lower right of the desktop and selecting Open Ozupadkey, you will see the following table.

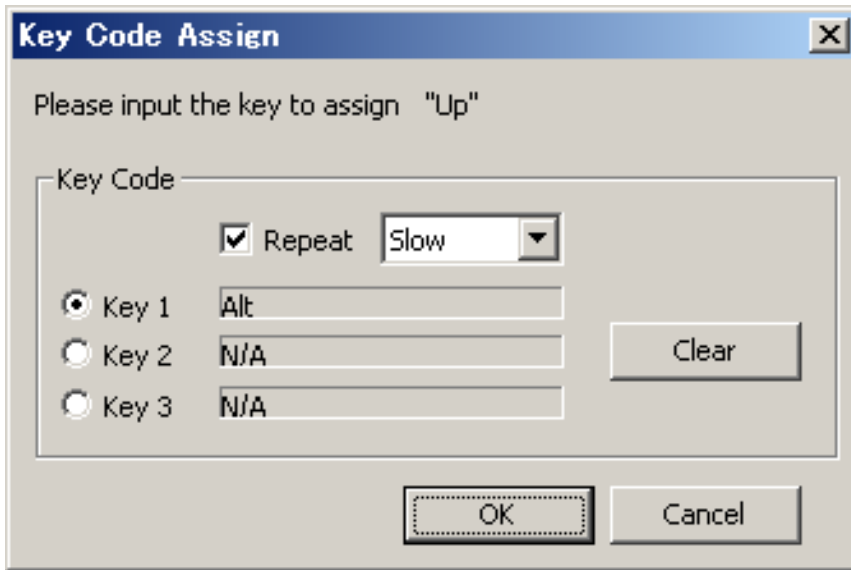


Uncheck Auto Select and then select the application you want to change the key assignment for.

You can create a new keyset for an application of your choice by clicking Create. The Delete button will delete a keyset that you no longer require.

Click Edit, you can now make your own key settings by editing the table, the maximum number of key settings is 256. Each OZUPAD button can be assigned to 1 key or a combination of key presses (up to 3).

Double click the OZUPAD button you want to edit, for example the UP button, the table shown below will appear.

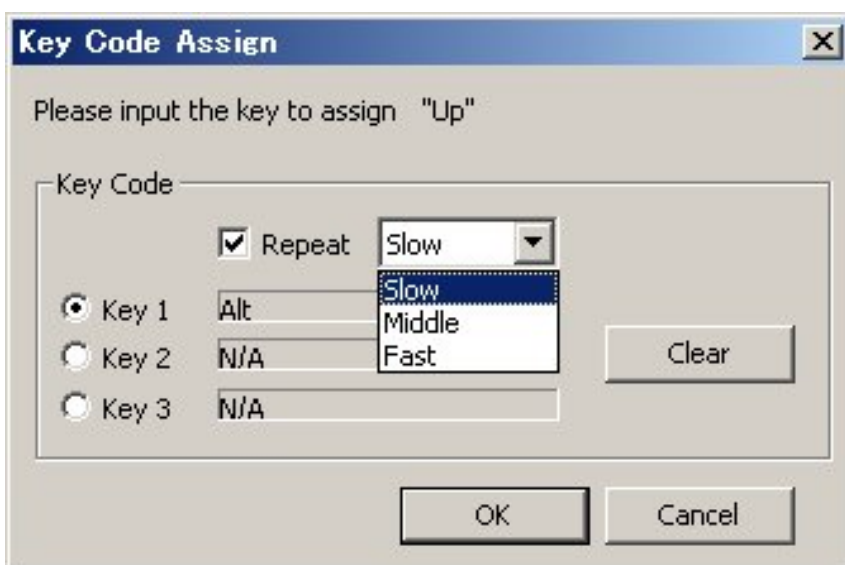


You can now assign up to 3 key presses to the Up button, in the example above the Up button has the same effect as pressing “Alt” on the keyboard.

You can set more complex key assignments, for example if you set Key 1 to “Shift”, Key 2 to “Ctrl” and Key 3 to “K” pressing the Up button has the same effect as pressing Shift + Ctrl + K on the keyboard.

Clicking Clear deletes the key settings that you have chosen and unassigned key is shown as N/A (Not Assigned).

Checking Repeat sets the selected button to auto-repeat. When you press and hold the assigned button the key sequence will be repeated continuously, the speed of the auto-repeat can be set to slow, medium or fast.



Once you have set up the key assignments for an OZUPAD button press OK.
Repeat this process for all of the OZUPAD buttons you want to setup.

There are 2 more options on the main OZUPADKEY screen:

Finger Pressure – select Light, Middle or Heavy pressure for OZUPAD, this allows you to choose how hard to press the Touchpad on an OZUPAD before the “press” is accepted by OZUPADKEY.

PAD is used as JOG – Checking this box sets the Touchpad to JOG mode
In JOG mode the user can use the touchpad as a volume control by pressing around the pad clockwise to increase the volume or anti-clockwise to reduce the volume.

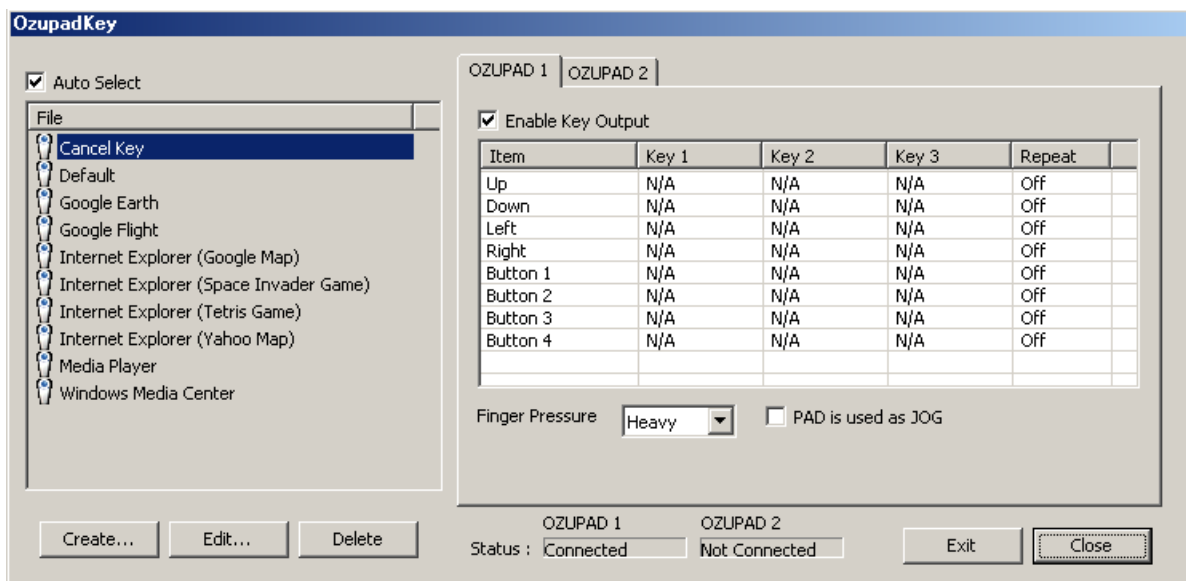
All of the settings described above can be applied to OZUPAD 1 or 2 by clicking on the appropriate tab on the OZUPADKEY main screen.

You can see the status of connected OZUPAD(s) on the OZUPADKEY main screen, in the example above only 1 OZUPAD is connected and it has been assigned as OZUPAD 1.

Clicking Close will close the OZUPADKEY main screen with OZUPADKEY still running, if you want to stop OZUPADKEY press Exit.

Chapter 5 Combination of Joystick and Mouse

As mentioned in the last section two OZUPADs can be connected to the user's PC, the two OZPUADs can be used in various modes to suit a wide variety of applications. The different modes are chosen by checking or unchecking the Enable Key Output box in the OZUPADKEY main screen as shown below.



Case 1 – both OZUPADs in key assigned mode

User can allocate any key to each button of two OZUPADs as described in section 4, for this mode check the Enable Key Output box for both OZUPAD 1 and OZUPAD 2.

Case 2 – OZUPAD 1 is used as a joystick, OZUPAD 2 for key assignment

Uncheck the Enable Key Output box for OZUPAD 1 and check it for OZUPAD 2. Ensure that OZUPAD 1 is in Joystick mode (purple LED).

Case 3 - OZUPAD 1 is used as a mouse, OZUPAD 2 for key assignment

Uncheck the Enable Key Output box for OZUPAD 1 and check it for OZUPAD 2. Ensure that OZUPAD 1 is in Finger mouse mode (blue LED).

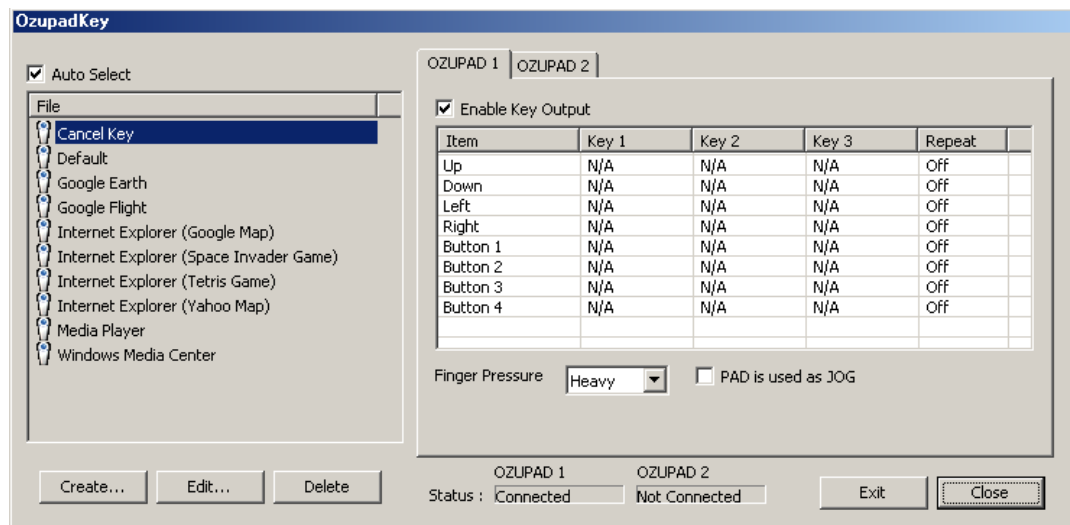
Note: For OZUPAD3WAY Finger mouse mode (blue LED) or Optical mouse mode (LED off) can both be used.

Chapter 6 How to fly on Google Earth

Google Flight is an example of an application where OZUPAD buttons are not automatically assigned by OZUPADKEY, however, you can still enjoy Google Flight by setting the OZUPAD button assignments manually.

Select the OZUPAD icon and open the OZUPADKEY table.

You will see the table below, select Google flight.



Uncheck Auto Select to allow key presses to be assigned.

With Joystick control enabled in Google Flight (see below) and OZUPAD set to Joystick mode the User can control their aircraft using the Touchpad as follows:

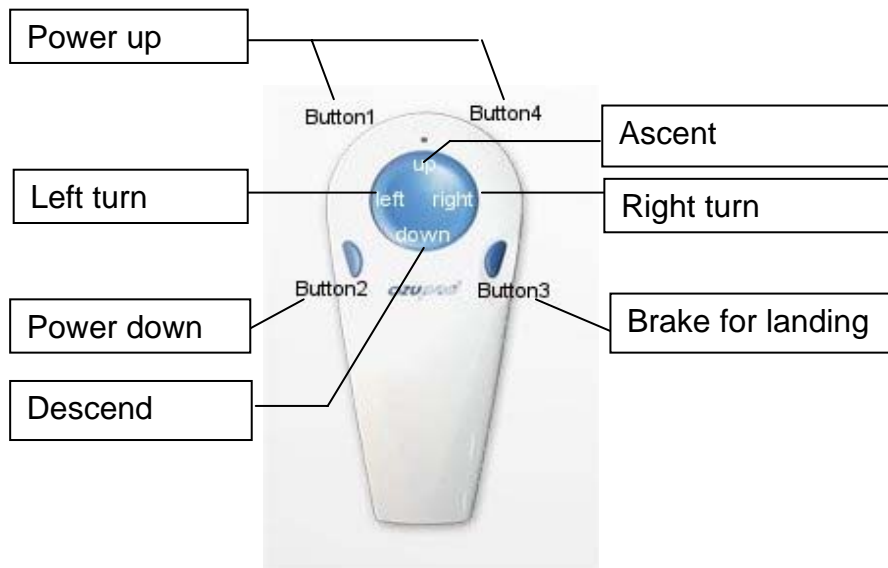
UP	Ascend
DOWN	Descend
LEFT	Turn to the left
RIGHT	Turn to the right

In addition we recommend following key setting for each of the OZUPAD buttons.

Button	Flight command	Key
Button 1	Increase engine power	Page Up
Button 2	Decrease engine power	Page down
Button 3	Apply brake	, (comma) +. (period)
Button 4	Increase engine power	Page Up

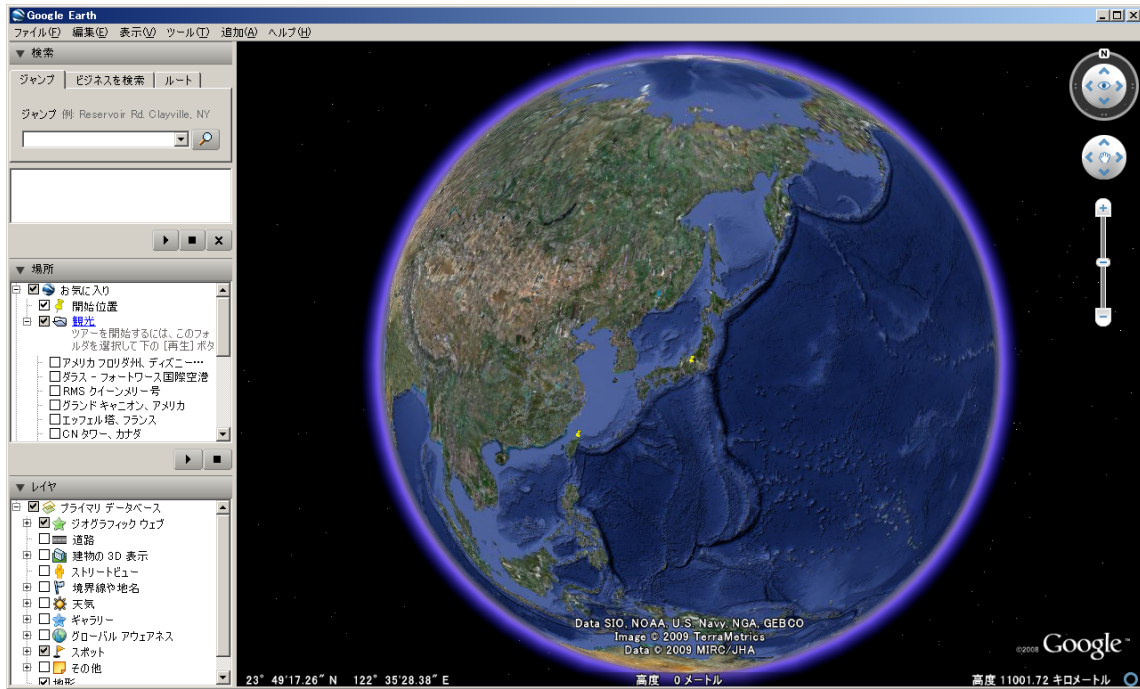
The User can now fly the plane using OZUPAD instead of the keyboard.

Recommended Button setting

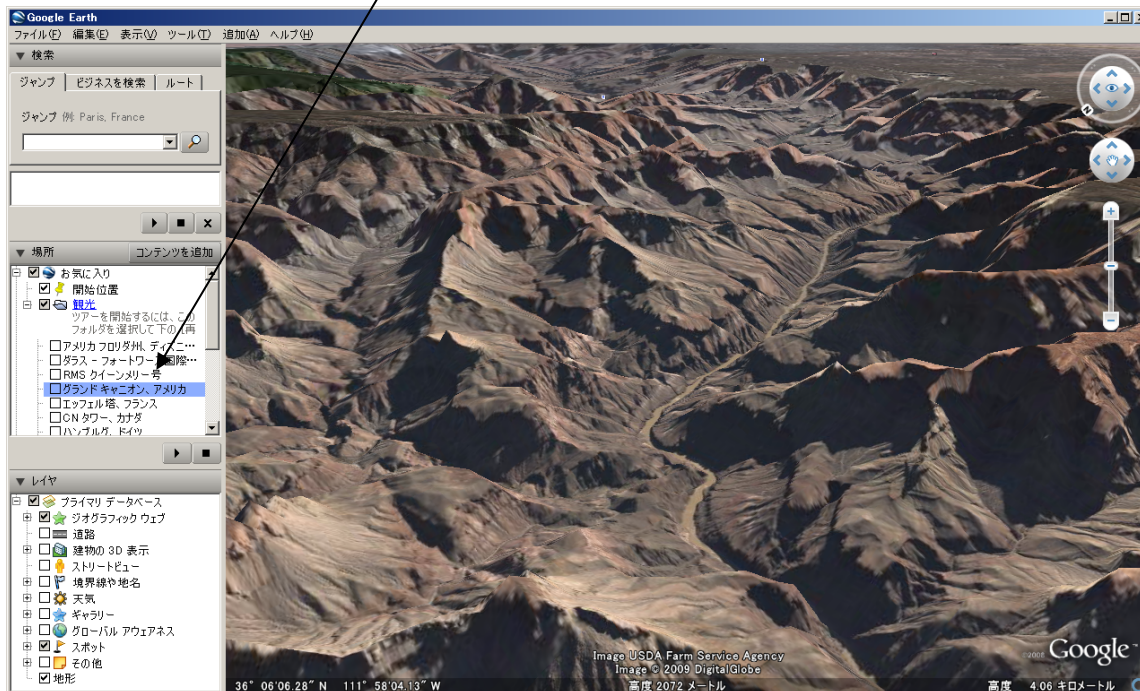


Flying in Google Earth using OZUPAD

You can fly on Google Earth using OZUPAD like you are the pilot of your own plane. Your PC must have Google Earth installed. When you run Google Earth you will see a screen similar to the one shown below.



For example, let's fly in the Grand Canyon



Select flight simulator from Tools



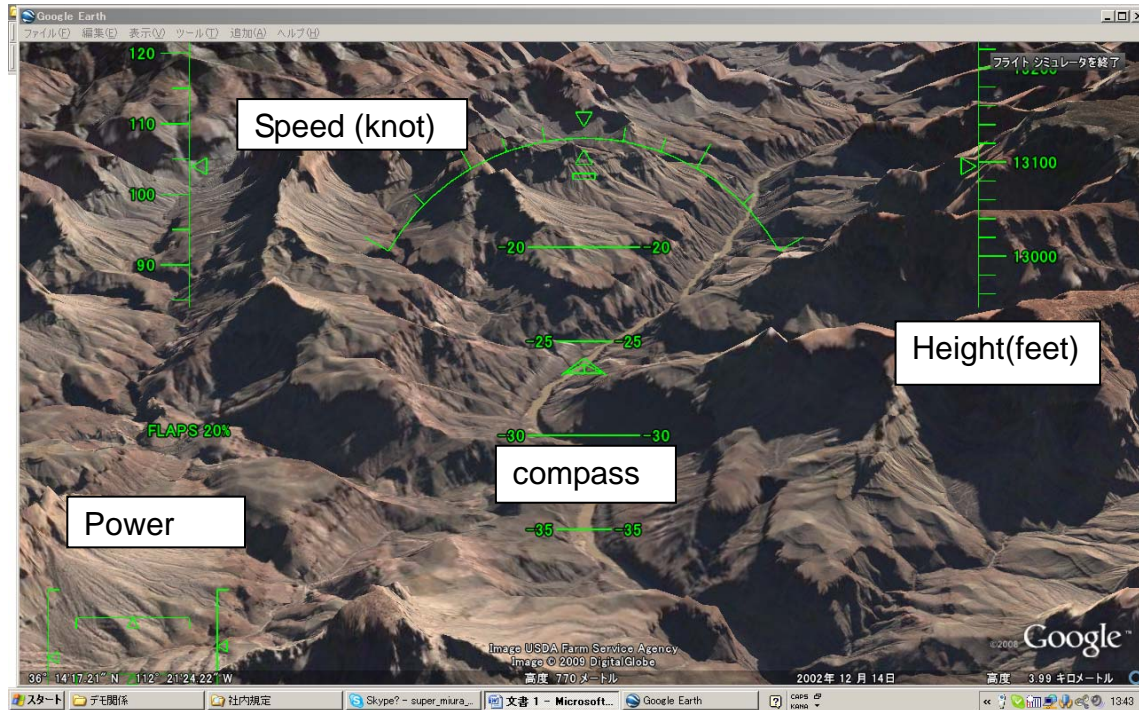
Select your airplane, Cessna or Jet plane. We recommend flying in the Cessna first.
 Select Joystick active.



Now you are ready to start.

Click Flight start, then change OZUPAD operation to Joystick mode by pressing Button 5. The LED will turn purple showing OZUPAD is in Joystick mode.

Now you can control your plane.



Chapter 7 General disclaimer

To use OZUPADKEY, you agree to indemnify and hold inculpable BlueMouse Technology Co. Ltd for any loss, liability or damage arising from or in connection with the contents or services of WWW.OZUPAD.COM.

It is not guaranteed that software obtained from WWW.OZUPAD.COM is virus free. Moreover, when software obtained from WWW.OZUPAD.COM by any chance is infected with a virus BlueMouse Technology Co. Ltd. does not assume any responsibility for any loss or damage that occurs as a result.

Following its policy of continuous improvement BlueMouse Technology Co. Ltd. reserves the right to change or update OZUPADKEY without prior notice.

BLUEMOUSE TECHNOLOGY IS NOT RESPONSIBLE FOR SPECIAL, INCIDENTAL, INDIRECT OR CONSEQUENTIAL DAMAGES, INCLUDING BUT NOT LIMITED TO LOST PROFITS, DOWNTIME, GOODWILL OR DAMAGE, WHETHER BASED ON CONTRACT OR UNDER ANY OTHER LEGAL THEORY AND IRRESPECTIVE OF WHETHER BLUEMOUSE TECHNOLOGY HAS ADVANCE NOTICE OF THE POSSIBILITY OF SUCH DAMAGES.

Chapter 8 Copyright

The layout of OZUPADKEY, the design, and the copyright concerning the structure belong to BlueMouse technology Ltd.

The copyright of software introduced via WWW.OZUPAD.COM belongs to the author or the company of software application as appropriate.