

## Safety pointer for the presentation

Nov.26 ,2011

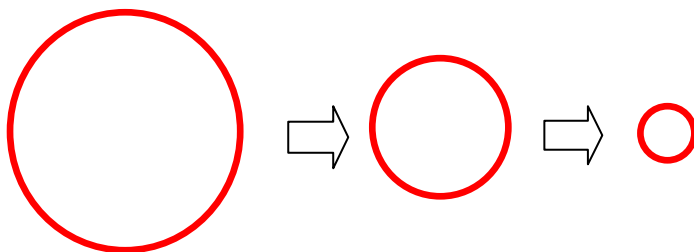
LASER Pointer is no longer necessary if you use a **highlight Mark** together with OZUPAD-AIR.

Download the application software from <http://www.ozupad.com/download.html> .

It is free to download, and can use it when USB receiver of OZUPAD-AIR connected to PC.

You can use the **highlight circle** or **highlight bar** like below.

One example is below



Red circle shape is getting smaller in a second.

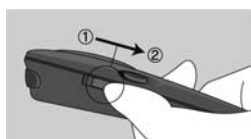
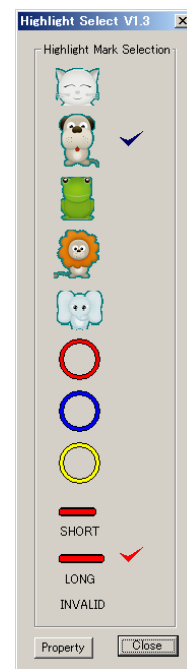
It targets to the position of mouse Cursor.

Making double click on Button 1, Change marker to the another.

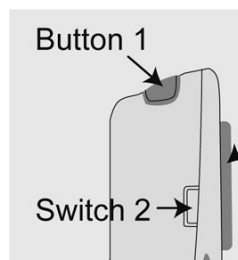
You can mark tow marker and change them by your index finger by pressing Button 1.

You can get those functions when switch 2 is turned to position 2.(presentation mode)

You can see the mark when Button 1 is pressed.



Turn to 2, it is Presentation mode.

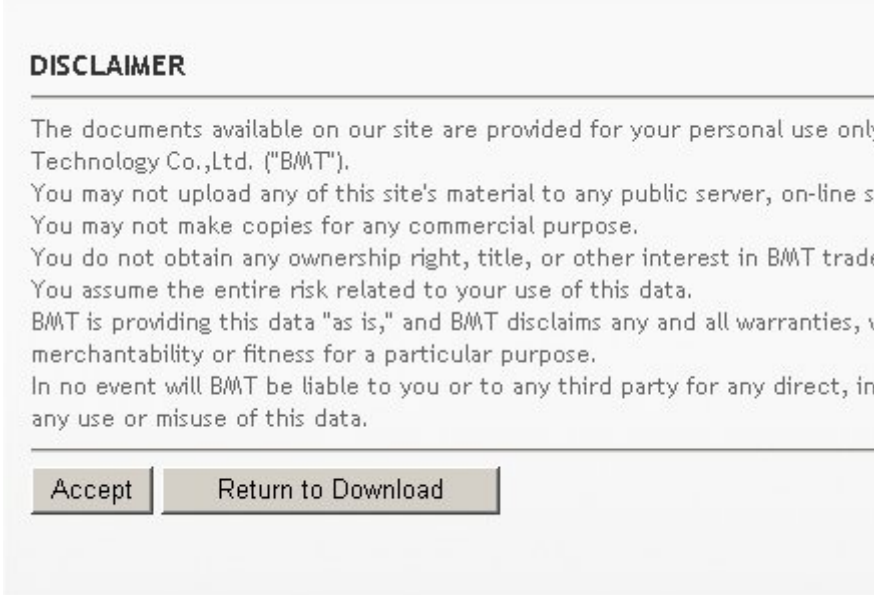


You can see the Circle when Button1 is pressed.

This function can use with focus function simultaneously that windows provided.

Click “Download highlight\_setup\_V1.4” showing below:

Click “ Accept”



**DISCLAIMER**

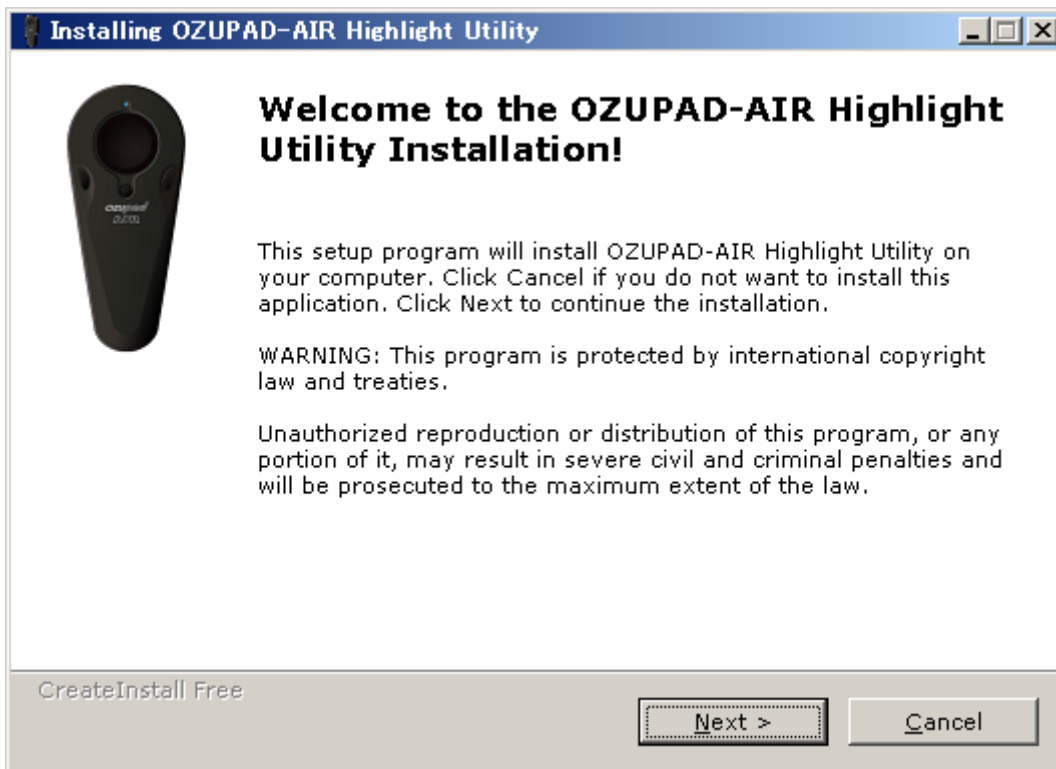
---

The documents available on our site are provided for your personal use only Technology Co.,Ltd. ("BMT").  
You may not upload any of this site's material to any public server, on-line se  
You may not make copies for any commercial purpose.  
You do not obtain any ownership right, title, or other interest in BMT trade  
You assume the entire risk related to your use of this data.  
BMT is providing this data "as is," and BMT disclaims any and all warranties, w  
merchantability or fitness for a particular purpose.  
In no event will BMT be liable to you or to any third party for any direct, inc  
any use or misuse of this data.

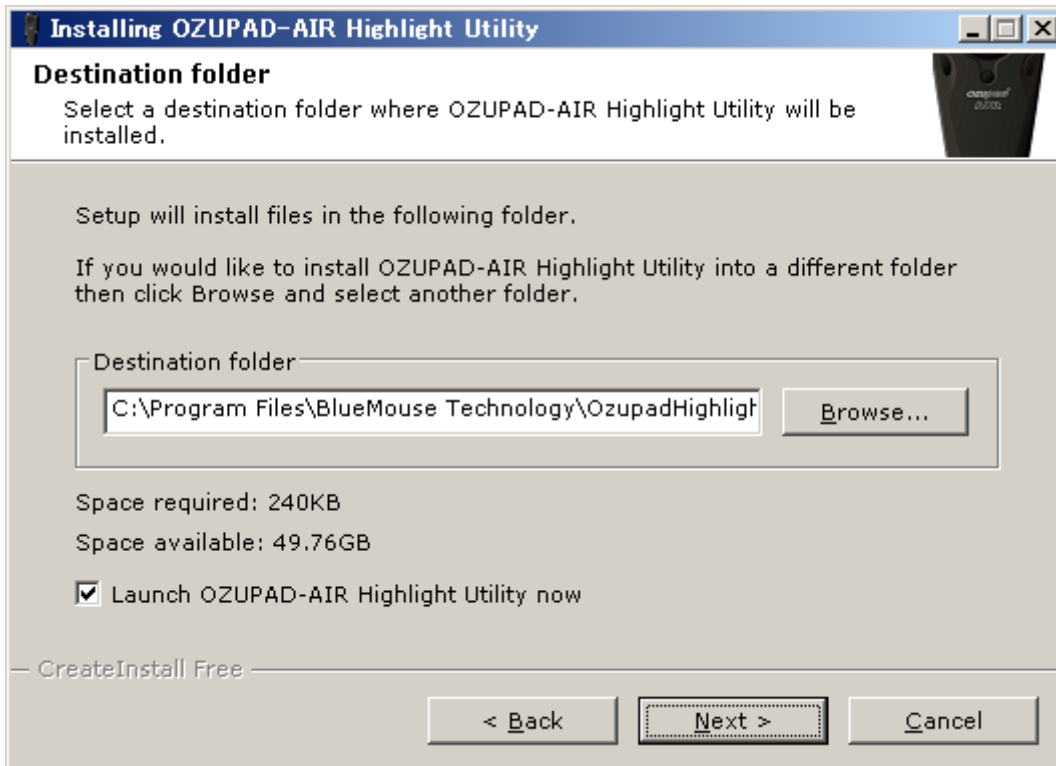
---

Copy folder to the desk top

this is ZIP folder, If this could not unzip automatically, please unzip first.



Click "Next>"



Click "Next>"

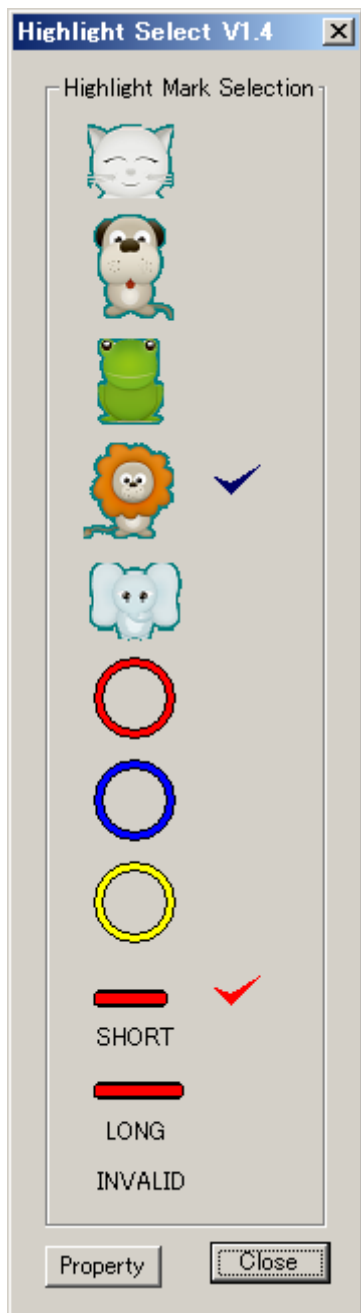


Black Ozupad icon appear at the Menu bar below after click “Finish” .



If you place mouse cursor on the icon, and click it ,then Menu appear.

You can select two or one favorite Mark.



Caution:

Please adjust the top line of both screen when you use two screens like below.

